

custom name dog or cat bowl

m madex

[VIEW IN BROWSER](#)

updated 10. 8. 2022 | published 10. 8. 2022

Summary

This is a dog bowl or cat bowl with a name of your choice. I printed it for my kids to play with their stuffed dogs....

[Household](#) > [Pets](#)

This is a dog bowl or cat bowl with a name of your choice. I printed it for my kids to play with their stuffed dogs. If you want to use this as a real bowl, pay attention to the datasheet of your filament. I recommend 3 outer lines and at least 5 solid top layers.

At first I did this in Fusion 360, but my license is about to expire, so I generalized and redid it in OpenSCAD. I like the OpenSCAD version much better.

Print Settings

Printer:

CL260 modified

Rafts:

No

Supports:

No

Resolution:

200

Infill:

20 or solid

Filament:

ESun PLA Category: Pets

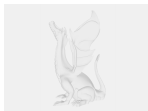
Model files



napf.scad



napf_not_filled.stl



napfhoppig.f3d



napf_filled.stl

[Find source .stl files on Thingiverse.com](#)

License

This work is licensed under a
[Creative Commons \(4.0 International License\)](#)



Attribution

- ✗ | Sharing without ATTRIBUTION
- ✓ | Remix Culture allowed
- ✓ | Commercial Use
- ✓ | Free Cultural Works
- ✓ | Meets Open Definition