

Yaesu mounting bracket for 8800/8900/7800/7900 and others



taxilian

[VIEW IN BROWSER](#)

updated 11. 8. 2022 | published 11. 8. 2022

Summary

This is a mounting bracket which fits the yaesu 8800, 8900, 7800, 7900, and probably others. When printed with ABS...

[Hobby & Makers](#) > [Other Ideas](#)

This is a mounting bracket which fits the yaesu 8800, 8900, 7800, 7900, and probably others. When printed with ABS this is surprisingly strong (3mm walls probably help), but you will likely need longer screws than the ones you might (or might not) have from Yaesu:

I highly recommend these screws for most radios: <https://smile.amazon.com/gp/product/B01F5COC42>

Print Settings

Rafts:

No

Supports:

No

Resolution:

0.3

Infill:

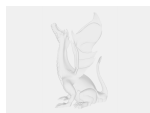
85%

Notes:

Highly recommend using very thick walls, enough perimeter shells that the sides are totally solid. I used these brackets to mount a radio to the wall of a trailer and it's been rock solid. A reasonable amount of force pulling on it did not cause it to break.

Category: Hobby

Model files

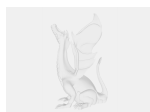


yaesu_8800.scad



yaesu_8800.stl

Other files



sources.txt

[Find source .stl files on Thingiverse.com](#)

License ©

This work is licensed under a
Creative Commons (4.0 International License)



Attribution

- ✗ | Sharing without ATTRIBUTION
- ✓ | Remix Culture allowed
- ✓ | Commercial Use
- ✓ | Free Cultural Works
- ✓ | Meets Open Definition