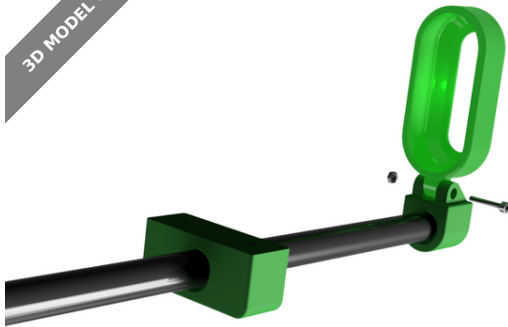


3D MODEL ONLY



Insta360 GO 2 Thrid person mount FPV - iFlight XL5 Titan



ThibLM

[VIEW IN BROWSER](#)

updated 24. 10. 2022 | published 24. 10. 2022

Summary

Insta360 GO 2 Thrid person mount FPV - iFlight XL5 Titan

[Hobby & Makers](#) > [RC & Robotics](#)

Tags: [iflight](#) [insta360go2](#)

FPV Thrid person view mount for Insta360 GO2.

Design is intended to bolt below the drone frame. Length between spacer is (25mm on the XL5 Titan Frame). Comment below if you want different screw spacing for your specific frame)

Hardware needed :

- M2 Nut
- M2x12mm Bolt
- Carbon Fiber tube 10mm outside diameter (at least 300mm length)

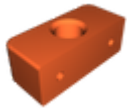
Support mount for Insta360 GO 2 and carbon fiber tube are hold with a bit of CA glue.

Post your makes!

Insta360 GO 2 mount is the same design thaht i did here :

- [Insta360 Go 2 mount for Flywoo Explorer LR 4](#)
- [Insta360 Go 2 Mount BetaFPV x95 V3](#)

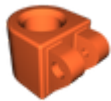
Model files



iflight-xl5-titan-mount-10mm-carbon-tube-25mm-screw... .stl



insta-360-go2-mount.stl



support-mount-insta360-go2-carbon-tube-10mm.stl

License ©

This work is licensed under a
[Creative Commons \(4.0 International License\)](#)



Attribution-NonCommercial

-
- ✗ | Sharing without ATTRIBUTION
 - ✓ | Remix Culture allowed
 - ✗ | Commercial Use
 - ✗ | Free Cultural Works
 - ✗ | Meets Open Definition