

3D MODEL ONLY

Voron V0.1 extra part cooling fan adapt from Nevermore V5 Duo

 **Lu123**[VIEW IN BROWSER](#)

updated 4. 2. 2023 | published 4. 2. 2023

Summary

Extra part cooling fan for V0.1 that can mount to the base of Nevermore V5 Duo.

[3D Printers](#) > [3D Printers - Upgrades](#)

Tags: [partcooling](#) [voron](#) [v0](#) [nevermore](#)

The 2 3010 part cooling fan usually isn't enough when you want to print faster with material like PLA. Since I put my printer outdoor, so I don't want take off the side panel to prevent the dust. So I use the base of https://github.com/nevermore3d/Nevermore_Micro/tree/master/V5_Duo

(specifically: Nevermore_Micro/V5_Duo/Mods/Rear-Backmount-Plenum_by-mvieleers/)

and create a fan shroud than can mount to the Nevermore base.

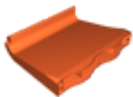
I use Dragon Hotend with Volcano heat block in my configuration(which longer than standard Dragon) and I use the "fan_shroud.stl", which will blow few mm above the bed. I made another "fan_shroud_H.stl" which blow 2mm higher if you use standard Dragon. I put the FreeCAD model file in case someone want to modified it.

Printing: I slice it into two parts in superslicer to reduce the overhang, then glue with acetone.

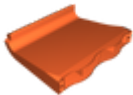
Model files



extra_fan_v3.fcstd

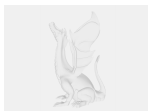


fan_shroud.stl



fan_shroud_h.stl

☐ about 2mm higher



fan_shroud.step

License ©

This work is licensed under a
GNU



General Public License v2.0

- ✗ | Sharing without **ATTRIBUTION**
- ✓ | Remix Culture allowed
- ✓ | Commercial Use
- ✓ | Meets Open Definition
- i | Share under the same license

