

Straight edge cutting guide

[VIEW IN BROWSER](#)

updated 24. 1. 2023 | published 24. 1. 2023

Summary

A cutting guide for straight and perpendicular cutting.



0.51 hrs



1 pcs



0.20 mm



0.40 mm



PLA



5 g



Prusa
MK3/S/S+

[Hobby & Makers](#) > [Tools](#)

Tags: [blade](#) [cutting](#) [cuttingguide](#) [scalpel](#) [straightedge](#)

A cutting guide for straight and perpendicular cutting.

I needed to cut 5-10mm thick material but had trouble cutting perpendicular to the plane of the material and ended up with the top side having the desired thickness and the bottom often being too narrow or too wide.

The cutting guide clamps a blade (scalpel, breakaway blades) perpendicular in the hinging part that is pushed into the material, while the main body slides along a 20x10x2 L profile Aluminium extrusion for straight cutting. The Two printed parts attach via a M3 bolt and an embedded (lock) nut.

It worked Ok as is but the blade clamp could use some improvements.

Model files



cutterguide_assembly.3mf

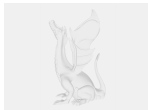
☐ Complete assembly, not for printing.



cutterguide_slidingblock.3mf



cutterguide_bladec clamp.3mf



cutterguide.step



cutterguide.f3d

Print files



cutterguide_02mm_pla_mk3s_31m.gcode

 PLA  0.40 mm  0.20 mm  0.51 hrs  5 g  Prusa MK3/S/S+

☐ Print file for the main body and blade clamp.

License

This work is licensed under a
[Creative Commons \(4.0 International License\)](https://creativecommons.org/licenses/by-sa/4.0/)



Attribution-ShareAlike

- ✘ | Sharing without ATTRIBUTION
- ✔ | Remix Culture allowed
- ✔ | Commercial Use
- ✔ | Free Cultural Works
- ✔ | Meets Open Definition