



Samsung Galaxy S7 Edge Cover

 **AntoDelG**

[VIEW IN BROWSER](#)

updated 11. 8. 2022 | published 11. 8. 2022

Summary

Samsung Galaxy S7 Edge Cover with holes and spaces in the right place (top mic, volume keys, on/off key)

[Gadgets](#) > [Portable Devices](#)

Samsung Galaxy S7 Edge Cover with holes and spaces in the right place (top mic, volume keys, on/off key)

Print Settings

Printer Brand:

RepRap

Printer:

P3Steel v4.0

Rafts:

No

Supports:

No

Resolution:

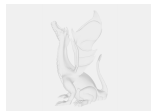
0,2

Notes:

PLA

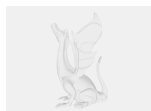
Category: Mobile Phone

Model files



funda_s7.stl

Other files



sources.txt

[Find source .stl files on Thingiverse.com](#)

License

This work is licensed under a
Creative Commons (4.0 International License)



Attribution

-
- ✗ | Sharing without ATTRIBUTION
 - ✓ | Remix Culture allowed
 - ✓ | Commercial Use
 - ✓ | Free Cultural Works
 - ✓ | Meets Open Definition