



Flight Test Power Pod, Linkage Connectors, & RunCam Holder || For Rc Planes



Dragon

[VIEW IN BROWSER](#)

updated 13. 8. 2022 | published 13. 8. 2022

Summary

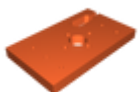
These were all things I ended up using for my first rc plane build.

[Hobby & Makers](#) > [RC & Robotics](#)

Each of these models I used for my first rc planes.

If you are interested here was my first experience with rc planes...

Model files



power-pod-motor-mount.stl

☐ Recommend using this only as an outline when making the wooden version



power-pod-center.stl



power-pod-bottom.stl



runcam-side-wall.stl



runcam-main-holder.stl



linkage.stl

☐ Might need to use a drill to make the hole larger if needed

License

This work is licensed under a
GNU



General Public License v2.0

-
- ✗ | Sharing without ATTRIBUTION
 - ✓ | Remix Culture allowed
 - ✓ | Commercial Use
 - ✓ | Meets Open Definition
 - i | Share under the same license