

Filament sensor support for ender 3



Gautier Aveline

[VIEW IN BROWSER](#)

updated 11. 8. 2022 | published 11. 8. 2022

Summary

It's a little basket to store your filament runout sensor when you don't use it. I designed it for my ender 3 but I...

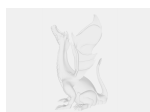
[3D Printers](#) > [Accessories](#)

Tags: [crealityender3](#) [ender3](#) [filamentsensor](#)

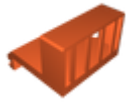
It's a little basket to store your filament runout sensor when you don't use it. I designed it for my ender 3 but I guess it should be ok with other Creality printers which have the same bracket.

Category: 3D Printer Accessories

Model files



[support_filament_sensor.sldprt](#)



support_filament_sensor.stl

[Find source .stl files on Thingiverse.com](#)

License ©

This work is licensed under a
Creative Commons (4.0 International License)



Attribution

- ✗ | Sharing without ATTRIBUTION
- ✓ | Remix Culture allowed
- ✓ | Commercial Use
- ✓ | Free Cultural Works
- ✓ | Meets Open Definition