



Kubota ROPS mount

 **Gman1185**

[VIEW IN BROWSER](#)

updated 11. 8. 2022 | published 11. 8. 2022

Summary

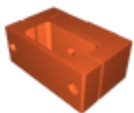
For mounting stuff on your kubota bx rops with 1/4 20 screw and nut.

[Hobby & Makers](#) > [Tools](#)

Tags: [kubota](#) [bx1880](#) [bx2680](#) [bx2380](#) [2380](#) [kubotabx](#)

I printed mine in pla+ to mount a large led light bar. has held up, had to replace one side due to a discussion with a large tree branch that it lost.

Model files



kubota-rops-mount-ver-1.stl

License

This work is licensed under a
Creative Commons (4.0 International License)



Attribution-ShareAlike

-
- ✗ | Sharing without ATTRIBUTION
 - ✓ | Remix Culture allowed
 - ✓ | Commercial Use
 - ✓ | Free Cultural Works
 - ✓ | Meets Open Definition