

Revo connect thread insert

 **Batenbat**

[VIEW IN BROWSER](#)

updated 11. 8. 2022 | published 11. 8. 2022

Summary

An insert for the Revo connect system to thread the nozzles in place

[3D Printers](#) > [Accessories](#)

Tags: [e3d](#) [e3drevo](#) [nozzle](#) [nozzleholder](#) [revo](#)

The models for **Revo Connect** have loose tolerances. I designed this insert to allow nozzles to thread in place and keep the nozzle secured. This way the vibrations of the printer will not move the nozzles and the printer can also be moved without the nozzles getting out of their holders.

If you want a snugger fit between the holders I recommend the files located here: <https://www.printables.com/model/170578-voron-bolt-on-brackets-revo-connect-nozzle-holders>

Tolerances

There are two models with different tolerances one for a snug fit and another with some clearance.

The snug fit one is designed slightly larger than the hole, when printing in ABS it should fit with a bit of force. Thread the nozzle in the insert and push into place.

The loose is 0.3mm smaller in diameter than the hole. A bit of glue can be used to hold them in place.

If any of the threads are a bit too tight you can try and chase them with an M4 bolt.

This remix is based on



Revo Connect ~ A modular system for storing Revo nozzles

by E3D

Model files



Snug fit

2 files



revo_conect_insert_snug.stl



revo_conect_insert_snug.3mf



Loose fit

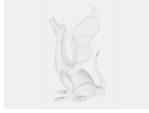
2 files



revo_conect_insert_loose.stl



revo_conect_insert_loose.3mf



revo_connect_insert.step

License

This work is licensed under a
GNU



General Public License v3.0

-
- ✗ | Sharing without ATTRIBUTION
 - ✓ | Remix Culture allowed
 - ✓ | Commercial Use
 - ✓ | Meets Open Definition
 - i | Share under the same license