

Cable car "Hawks Lane"



Maru

[VIEW IN BROWSER](#)

updated 20. 9. 2023 | published 20. 9. 2023

Summary

A model of a cable car including bottom and top station and a cable car cabin designed to be powered by NEMA17 motor.

[Toys & Games](#) > [Building Toys](#)

Tags: [cable](#) [car](#) [arduino](#) [nema17](#) [lift](#) [cabin](#)

The model of a cable car including the bottom and top station and a cable car cabin I have made for my son. To be completely honest, I probably had more fun in designing and building it then he had playing with it later, but he still loves it!

Bottom station is designed to hold in a NEMA17 motor and electronics (Arduino nano) which enables the button controls over the cable car (left-stop-right) as well as automatic stopping of the cable car inside the bottom station by using a magnet inside the cabin and sensor inside the base.

Both bottom and top station are meant to be mounted sideways on a wardrobe or a wall and connected using a strong non-flexible string. The cable car can then run from the ground (were a kid can place some lego inside :)) and up to near the ceiling and back.

The cabin itself with some minor modification was taken from a model of Ivanov design studio: A toy cable car "Liftche" so I'd like to thank Ivan for the inspiration.

I have attached detailed instructions on building the model, all the STL files as well as step files if you would like to modify it and develop further.

The only thing I didn't document in detail is electronics assembly and programing just because I didn't find time. However, if you have any questions about it please just ask I and I would be happy to explain and share everything.

Have fun! ;)

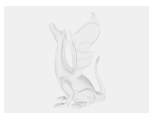
This remix is based on



A toy cable car "Liftche"

by Ivanov design studio

Model files



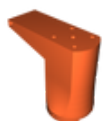
cable_car_model_set.step



bottom_station_pulley.stl



bottom_station_base.stl



bottom_station_pole.stl



bottom_station_bottom.stl



left_button.stl



right_button.stl



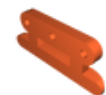
stop_button.stl



bottom_station_left_horn.stl



bottom_station_right_horn.stl



incline-pully_holder.stl



incline_pully_wheel.stl



top_station_base.stl



top_station_holder.stl



top_station_pulley.stl



cable_car_cabin.stl



cable_car_mount.stl



cable_car_arm.stl



cable_car_hook_opened.stl



cable_car_hook_closed.stl



cable_guide.stl



cable_car_bottom_cap.stl

Other files



cable_car_hawks_lane_v10.pdf



zicara_v0_eng_comments.ino

📄 Since I got few questions about the arduino code, I am attaching it here. Enjoy!

License ©

This work is licensed under a
Creative Commons (4.0 International License)



Attribution

- ✗ | Sharing without ATTRIBUTION
- ✓ | Remix Culture allowed
- ✓ | Commercial Use
- ✓ | Free Cultural Works
- ✓ | Meets Open Definition