



Dremel Holder



SteveS42

[VIEW IN BROWSER](#)

updated 15. 1. 2023 | published 15. 1. 2023

Summary

A clamp mounted holder for Dremel 395.



2.47 hrs



1 pcs



0.20 mm



0.40 mm



ABS



24 g



Prusa
MK3/S/S+

[Hobby & Makers](#) > [Tools](#)

Tags: [dremel](#) [fusion360](#) [holder](#) [dremel395](#)

This is a simple holder that is easy to attach and is meant to be help in place by a clamp.

I used a threaded rod, wing nuts, and washers that I had on hand.

I have a model 395, but I'm sure it will fit many others. The diameter is 47mm. It is easily changed in the Fusion 360 design included.

Inspired by <https://www.thingiverse.com/thing:857119>

This remix is based on



Dremel 395 Holder (V2) for table top or vise

by msburko

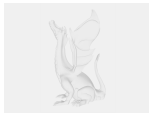
Model files



dremel_holder-v1.stl



dremel_holder.3mf



dremel_holder-v1.f3d

Print files



dremel_holder_02mm_20_2p_2h28m_945287m_stratasys-p4... .gcode

⚙ ABS ⚙ 0.40 mm ⚙ 0.20 mm ⌚ 2.47 hrs ⚖ 24 g 🖨 Prusa MK3/S/S+

License

This work is licensed under a
[Creative Commons \(4.0 International License\)](#)



Attribution—Noncommercial—Share Alike

✖ | Sharing without ATTRIBUTION

- ✓ | Remix Culture allowed
- ✗ | Commercial Use
- ✗ | Free Cultural Works
- ✗ | Meets Open Definition