

# Ender 3 Bearing Roller Spool

 **Wyliebutler**

[VIEW IN BROWSER](#)

updated 12. 8. 2022 | published 12. 8. 2022

## Summary

This was printed at 0.2mm layer height in standard PLA. Supports were used since it is difficult to print any...

---

[3D Printers](#) > [Accessories](#)

---

Tags: ender3 spoolholder

---

This was printed at 0.2mm layer height in standard PLA. Supports were used since it is difficult to print any orientation.

The standard skateboard bearing pins were glued in using cyanoacrylate.

## Print Settings

### Printer Brand:

Crealitiy

### Printer:

Ender 3

### Supports:

Yes

**Resolution:**

0.2mm

**Infill:**

20%

**Filament:**

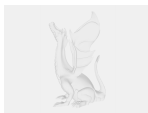
N/A PLA

N/A How I Designed This =====

Used a combination of DesignSpark Mechanical, TinkerCad, and 3D Builder

Category: 3D Printer Accessories

## Model files



**large\_display\_ender3\_bearing\_spool\_roller\_257592.stl**

---



**ender3\_bearing\_spool\_roller\_nut.stl**

---



**ender3\_bearing\_spool\_roller.stl**

---



**ender3\_bearing\_spool\_roller\_pin.stl**

---

[Find source .stl files on Thingiverse.com](#)

# License ©

This work is licensed under a  
**Creative Commons (4.0 International License)**



## Attribution

---

- ✗ | Sharing without ATTRIBUTION
- ✓ | Remix Culture allowed
- ✓ | Commercial Use
- ✓ | Free Cultural Works
- ✓ | Meets Open Definition