



## esp32-case

M Mihai

[VIEW IN BROWSER](#)

updated 15. 5. 2019 | published 15. 5. 2019

## Summary

OpenSCAD sedigned case for the esp32 development board. Thanks to Sergio Vilches for the rounded corners!



1.67 hrs



1 pcs



0.20 mm



0.40 mm



PLA



19 g

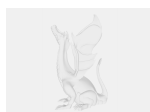


Prusa  
MK3/S/S+

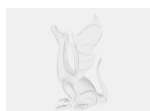
[Hobby & Makers](#) > [Electronics](#)

OpenSCAD sedigned case for the esp32 development board.  
Thanks to Sergio Vilches for the rounded corners!

## Model files



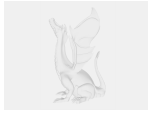
**top.scad**



**round\_cube.scad**



**wifi.svg**



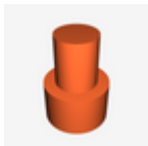
**pin.scad**



**wifi.dxf**



**bottom.scad**



**pin.stl**



**top.stl**



**bottom.stl**

## Print files



**esp32\_02mm\_pla\_mk3.gcode**

⚙️ PLA ⚙️ 0.40 mm ⚙️ 0.20 mm ⌚ 1.67 hrs ⚖️ 19 g 🖨️ Prusa MK3/S/S+

# License

This work is licensed under a  
**Creative Commons (4.0 International License)**



**Attribution-ShareAlike**

- 
- ✗ | Sharing without ATTRIBUTION
  - ✓ | Remix Culture allowed
  - ✓ | Commercial Use
  - ✓ | Free Cultural Works
  - ✓ | Meets Open Definition