



Cap Container (Tetra Pak Milk Cap)

[VIEW IN BROWSER](#)

updated 12. 8. 2022 | published 12. 8. 2022

Summary

simple container for small things, fast print with vase mode, maximal upcycling



0.45 hrs



1 pcs



0.25 mm



0.40 mm



PLA



2 g



Prusa MINI /
MINI+

[Hobby & Makers](#) > [Organizers](#)

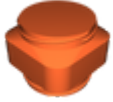
Tags: [cap](#) [container](#) [vasemode](#)

i made my own container for two caps of milk, inside diameter 35 mm

the container itself is a rounded square for better stacking

I print it at fast speed(150% of regular) and higher temperature and higher filament flow for better adhesion

Model files



container.stl

Print files



container_025mm_pla_mini_27m.gcode

PLA 0.40 mm 0.25 mm 0.45 hrs 2 g Prusa MINI / MINI+

License ©



This work is licensed under a
[Creative Commons \(4.0 International License\)](#)

Attribution-NonCommercial

-
- ✗ | Sharing without ATTRIBUTION
 - ✓ | Remix Culture allowed
 - ✗ | Commercial Use
 - ✗ | Free Cultural Works
 - ✗ | Meets Open Definition