



Sunlu S2 filadryer wall mount



Martin_au

[VIEW IN BROWSER](#)

updated 5. 1. 2023 | published 5. 1. 2023

Summary

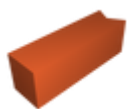
Wall mount for the Sunlu S2 (can be adapted to other things too)

[3D Printers](#) > [Accessories](#)

Tags: [wall](#) [mount](#) [s2](#) [filadryer](#) [sunlu](#)

A wall mount for the Sunlu S2. Needs a couple of 4mm or so screws to attach to the wall, and a pair of 40mm m8 nuts and bolts (though you can get away with a longer single m8 bolt if you want). Also needs 4 M3 brass inserts to hold the spool-holder tray in place. If you want to adapt it to another spool dryer or similar you can just replace the tray.

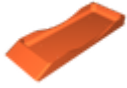
Model files



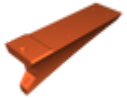
nuts-holder.stl



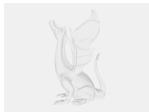
mount-part-2.stl



tray.stl



mount-part-1.stl



sunlu-s2-mount.stp

License ©



This work is licensed under a
[Creative Commons \(4.0 International License\)](#)

Attribution

- ✖ | Sharing without ATTRIBUTION
- ✓ | Remix Culture allowed
- ✓ | Commercial Use
- ✓ | Free Cultural Works
- ✓ | Meets Open Definition