

Dyson V11 Attachment holders



InqEnzo

[VIEW IN BROWSER](#)

updated 12. 8. 2022 | published 12. 8. 2022

Summary

3 types of holders for Dyson V11 attachments and probably other Vs as well



21.19 hrs



3 pcs



0.15 mm



0.40 mm



PLA



152 g



Prusa MINI /
MINI+

[Household](#) > [Other House Equipment](#)

Tags: [dyson](#) [dysonadapter](#) [dysonv11](#) [dysonvacuum](#)

The idea and design was somewhat inspired by

<https://www.printables.com/model/29577-dyson-v11-wall-bracket-for-accessories-wandhalteru%2Fcomments>

I had a few things about it that didn't fit my needs so I made my own. All of them are hung with 2 drywall screws, except V3 uses 1 drywall screw and 1 pan head screw. They are designed to be made out of PLA as they have the recycle logo. PLA is strong enough and for indoor use temp should not be a problem. There are 3 types.

V1 = will hold 2 attachments. 1 of the attachments can be a power type that needs a plug (see the 4th pic) it sticks out farther from the wall also.

V2 = Holds 2 and is close to the wall (the middle one in the main picture)

V3 = is at an angle and only holds 1. Its for the odd shaped brush (on left in main picture or see 5th pic)

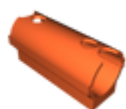
Model files



dyson-attachment-holder-v3.stl



dyson-attachment-holder-v1.stl



dyson-attachment-holder-v2.stl

Print files



dyson-attachment-holder-v3_015mm_pla_mini_4h22m.gcode

🌀 PLA 📏 0.40 mm 📏 0.15 mm ⌚ 4.37 hrs ⚖️ 30 g 🖨️ Prusa MINI / MINI+



dyson-attachment-holder-v2_015mm_pla_mini_6h52m.gcode

🌀 PLA 📏 0.40 mm 📏 0.15 mm ⌚ 6.87 hrs ⚖️ 49 g 🖨️ Prusa MINI / MINI+



dyson-attachment-holder-v1_015mm_pla_mini_9h57m.gcode

🌀 PLA 📏 0.40 mm 📏 0.15 mm ⌚ 9.95 hrs ⚖️ 73 g 🖨️ Prusa MINI / MINI+

License ©

This work is licensed under a
Creative Commons (4.0 International License)



Attribution-NonCommercial

- ✗ | Sharing without ATTRIBUTION
- ✓ | Remix Culture allowed
- ✗ | Commercial Use
- ✗ | Free Cultural Works
- ✗ | Meets Open Definition