

## Cetus 3D MK3 Fan Upgrade

S Semiconductor15

[VIEW IN BROWSER](#)

updated 12. 8. 2022 | published 12. 8. 2022

### Summary

Fan upgrade for Cetus MK3

[3D Printers](#) > [3D Printers - Upgrades](#)

Tags: [5015](#) [blower](#) [cfd](#) [fan](#) [fanduct](#) [noctua](#)

I have upgraded my Cetus 3D MK3 by increasing cooling both for extruder motor, hotend and layers. Great PLA bridging performance, highly recommended. For now, for power I used additional 12V power supply, later on I am planning to change main board of the printer so everything will be tidier.

I am using 2 5015 blower fans for layer cooling, one Noctua 40 NF-A4x20 for extruder motor and hotend cooling and a generic 40x40x10 for extruder motor cooling.

Note that there are 3 magnets inside the parts. Two of the magnets are inside the Fan Holder aligning with M3 bolts on extruder motor's front face and the other magnet is inside the Fan Duct - L also aligning with M3 bolt on extruder motor. In order to place the magnets I paused the print at the adequate layer and pushed the magnets in.

CFD for fan ducts are attached.

# Model files



## 40x40x10-fan-holder.stl

☐ optional for extruder motor cooling



## 5015-duct-l.step

☐ 100 percent infill recommended - Magnet inside the model



## fan-holder.stl

☐ Magnets inside the model



## noctua-shroud.stl



## fan-holder.step

☐ Magnets inside the model



## 40x40x10-fan-holder.step

☐ optional for extruder motor cooling



## noctua-shroud.step



## 5015-duct-v5-l.stl

☐ 100 percent infill recommended - Magnet inside the model



## 5015-duct-r.step

☐ 100 percent infill recommended

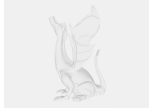


## 5015-duct-v5-r.stl

☐ 100 percent infill recommended



**extruderheatblock.step**



**cetus3d-mk3-upg-v3-extruder.step**

## License ©

This work is licensed under a  
**Creative Commons (International License)**



**Public Domain**

- 
- ✓ | Sharing without ATTRIBUTION
  - ✓ | Remix Culture allowed
  - ✓ | Commercial Use
  - ✓ | Free Cultural Works
  - ✓ | Meets Open Definition