

Screw and DIN rail mounts for Wago 243-x04 and 243-x08 KNX connectors



fns720

[VIEW IN BROWSER](#)

updated 12. 8. 2022 | published 12. 8. 2022

Summary

Make your own KNX wire connector mounts!

[Hobby & Makers](#) > [Electronics](#)

Tags: [din](#) [knx](#) [mount](#) [wago](#) [243](#)

Wago is selling their mounting solution for these tiny wire connectors but they were out of stock when I wanted to buy them. On top of that I'm pretty sure all of you guys agree there is a lot more fun iterating such a small piece of plastic design 27 times before release :)

The DIN rail mount spring with minimal footprint is designed to use it as universal so you can add your own device holder and use it as a generic mount on DIN rails. I have uploaded the Fusion 360 file so you can check the dimensions and make your own add-on.

Model files



wago-243-x04-mount-for-din-rail-spring.stl



2x-wago-243-x04-screw-mount-without-sole-vertical.stl



4x-wago-243-x08-screw-mount-with-sole.stl



din-rail-spring.stl



wago-243-x08-mount-for-din-rail-spring.stl



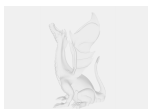
4x-wago-243-x08-screw-mount-without-sole.stl



2x2-wago-243-x08-screw-mount.stl



2x-wago-243-x04-screw-mount-without-sole-horizontal.stl



din-rail-spring-wago-243-x08-mount-v27.f3d

License

This work is licensed under a
Creative Commons (4.0 International License)



Attribution—Noncommercial—Share Alike

- ✗ | Sharing without ATTRIBUTION
- ✓ | Remix Culture allowed
- ✗ | Commercial Use
- ✗ | Free Cultural Works
- ✗ | Meets Open Definition