



Gas Valve Key

 eking[VIEW IN BROWSER](#)

updated 3. 1. 2023 | published 3. 1. 2023

Summary

Key for 15mm gas valve.



5.09 hrs



1 pcs



0.20 mm



0.40 mm



PET



62 g

Prusa
MK3/S/S+[Household](#) > [Other House Equipment](#)Tags: [valve](#) [key](#) [15mm](#) [gas](#) [klic](#) [plyn](#)

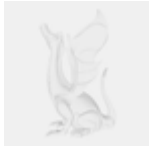
If you want to modify my model, you can use the STEP file in the attachment or directly in the OnShape web environment.

[Onshape Link](#)

Print notes:

I used a modifier to strengthen the key head. For more print details see 3MF file. I had to use print support because I wanted to print the model as one piece.

This remix is based on



Onshape

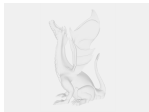
Model files



gas-valve-key.stl



gas-valve-key.3mf



gas-valve-key.step

Print files



gas-valve-key_02mm_petg_mk3s_5h5m.gcode

 PET  0.40 mm  0.20 mm  5.09 hrs  62 g  Prusa MK3/S/S+

[Find source .stl files on Thingiverse.com](#)

License

This work is licensed under a
[Creative Commons \(4.0 International License\)](#)



Attribution-ShareAlike

- ✗ | Sharing without ATTRIBUTION
- ✓ | Remix Culture allowed
- ✓ | Commercial Use
- ✓ | Free Cultural Works
- ✓ | Meets Open Definition