



Vintage Receiver Speaker Plug



lir

[VIEW IN BROWSER](#)

updated 7. 10. 2022 | published 7. 10. 2022

Summary

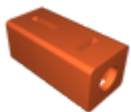
Speaker plugs for older receivers from seventies.

[Gadgets](#) > [Audio](#)

Tags: [amplifier](#) [pioneer](#) [receiver](#) [speaker](#) [vintage](#) [plug](#)

I restored a vintage pioneer receiver to drive the DML speakers I built and I could upgrade it with banana plugs but I thought it could be fun project to make plugs to fit the original sockets. I used brass inserts and M3x6mm screws. The washer insert is 0.5mm thick and the prong is 1.5mm thick with a lot of filing.

Model files



pioneer-plug-new-v4.stl

License

This work is licensed under a
Creative Commons (4.0 International License)



Attribution—Noncommercial—Share Alike

- ✗ | Sharing without ATTRIBUTION
- ✓ | Remix Culture allowed
- ✗ | Commercial Use
- ✗ | Free Cultural Works
- ✗ | Meets Open Definition