



## Prusa BEAR/2020 profile reverse bowden holder with magnets



nimus

[VIEW IN BROWSER](#)

updated 23. 12. 2022 | published 23. 12. 2022

### Summary

Prusa BEAR/2020 profile reverse bowden holder for PC4-M6 fitting and 6x3 magnets

[3D Printers](#) > [3D Printers - Upgrades](#)

Tags: [2020extrusion](#) [prusabear](#) [reversebowden](#)  
[prusabearupgrade](#) [2020profile](#)

This model designed for 2020 extrusions, PC4-M6 fittings and 3 magnets with 6mm x 3mm dimensions (such as in Voron's sourcing guide).

There are three models in \*.step and \*.stl - for 2020 extrusion (v-slot and non v-slot) and for dryer PTFE tube holder.

I printed this model with black PETG by Bestfilament on Original Prusa smooth PEI sheet.

# Model files



**bear-reverse-bowden-pc4-m6-3magnets-6x3-dryer-part.stl**



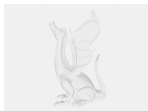
**bear-reverse-bowden-pc4-m6-non-v-slot-3magnets-6x3.stl**



**bear-reverse-bowden-pc4-m6-v-slot-3magnets-6x3.stl**



**bear-reverse-bowden-pc4-m6-non-v-slot-3magnets-6x3.step**



**bear-reverse-bowden-pc4-m6-v-slot-3magnets-6x3.step**



**bear-reverse-bowden-pc4-m6-3magnets-6x3-dryer-part.step**

## License ©

This work is licensed under a  
[Creative Commons \(4.0 International License\)](https://creativecommons.org/licenses/by/4.0/)



### Attribution

- ✗ | Sharing without ATTRIBUTION
- ✓ | Remix Culture allowed
- ✓ | Commercial Use
- ✓ | Free Cultural Works
- ✓ | Meets Open Definition

