



XT90 panel mount



cybermouse

[VIEW IN BROWSER](#)

updated 7. 10. 2022 | published 7. 10. 2022

Summary

I designed this simple XT90 connector panel mount bracket. Consists of two 3D printable parts and a PCB.

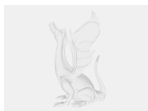
[Hobby & Makers](#) > [Electronics](#)

Tags: [battery](#) [batteryconnector](#) [connector](#) [panelmount](#)
[xt90](#)

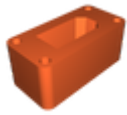
Simple XT90 connector panel mount bracket. The connector is soldered to a PCB which was made on a small CNC machine. Parts were printed in PETG.

If you build this please share a make, you can also tag me on instagram @_cybermouse_

Model files



xt90_housing_cover.fcstd



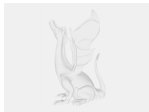
xt90_housing.stl



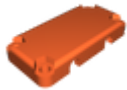
xt90_housing.fcstd



xt90_housing_cover.stl



xt90_back_cover.fcstd



xt90_back_cover.stl

Other files



xt90_pcb.zip

☐ PCB files made in KiCAD

License

This work is licensed under a
[Creative Commons \(4.0 International License\)](https://creativecommons.org/licenses/by/4.0/)



Attribution

- ✗ | Sharing without ATTRIBUTION
- ✓ | Remix Culture allowed
- ✓ | Commercial Use
- ✓ | Free Cultural Works

✓ | Meets Open Definition