



## Girl Scout Bat Signal

**A** Andrew Miller

[VIEW IN BROWSER](#)

updated 7. 10. 2022 | published 7. 10. 2022

### Summary

I made this for one of my friends. It's a desktop light with the Trefoil cookie design for the mask. Lens and mask can...

[Household](#) > [Home Decor](#)

I made this for one of my friends. It's a desktop light with the Trefoil cookie design for the mask.

Lens and mask can be printed separately and glued together or printed as one piece with changing filament color at initial layer of mask.

### Print Settings

#### Printer Brand:

Crealitiy

#### Printer:

Ender 3

#### Rafts:

No

#### Supports:

Yes

**Resolution:**

.20 or finer

**Infill:**

50-100%

**Filament:** Overture Black, Inland White & Silk Silver PLA Black, White & Silk Silver

**Notes:**

The lense is printed in White PLA while the plate to hold the lights internally was printed in Silk Silver for reflective surface. Also other pieces are printed in Black PLA.

\*\*\*Supports are only needed for Base.\*\*\*

## **Post-Printing**

### **Electronic Components**

Battery Pack - [https://www.amazon.com/dp/B08119TXFH?](https://www.amazon.com/dp/B08119TXFH?ref_=cm_sw_r_cp_ud_dp_2SRJJP07J9E6D36Q1QM2)  
[ref\\_=cm\\_sw\\_r\\_cp\\_ud\\_dp\\_2SRJJP07J9E6D36Q1QM2](https://www.amazon.com/dp/B08119TXFH?ref_=cm_sw_r_cp_ud_dp_2SRJJP07J9E6D36Q1QM2) **\*Attached by Double Sided Velcro\***

5mm LED Light Holders - [https://www.amazon.com/dp/B01LX8JVG7?](https://www.amazon.com/dp/B01LX8JVG7?ref_=cm_sw_r_cp_ud_dp_T7SSBBE4GJQ0XKC889G3)  
[ref\\_=cm\\_sw\\_r\\_cp\\_ud\\_dp\\_T7SSBBE4GJQ0XKC889G3](https://www.amazon.com/dp/B01LX8JVG7?ref_=cm_sw_r_cp_ud_dp_T7SSBBE4GJQ0XKC889G3)

5mm LED Lights - [https://www.amazon.com/dp/B01NAHYUBD?](https://www.amazon.com/dp/B01NAHYUBD?ref_=cm_sw_r_cp_ud_dp_FQPBWYJFR7GHVYM9YJGE)  
[ref\\_=cm\\_sw\\_r\\_cp\\_ud\\_dp\\_FQPBWYJFR7GHVYM9YJGE](https://www.amazon.com/dp/B01NAHYUBD?ref_=cm_sw_r_cp_ud_dp_FQPBWYJFR7GHVYM9YJGE)

I ran the lights in parallel to prevent all lights from going out if one went out.

## **How I Designed This**

### **Design Info**

Designed in Fusion 360. Inside the case, there is a ledge where the light plate can sit. This provides space behind to hide the wires from the LEDs and Battery Pack.

Category: Decor

# Model files



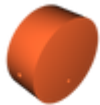
**3x\_gs\_signal\_spacer.stl**

---



**2x\_gs\_signal\_thumpscrewcap.stl**

---



**1x\_gs\_signal\_case.stl**

---



**1x\_gs\_signal\_bracket.stl**

---



**1x\_gs\_signal\_mask.stl**

---



**1x\_gs\_signal\_lightplate.stl**

---



**1x\_gs\_signal\_mergedlensemasks.stl**

---



**1x\_gs\_signal\_lense.stl**

---



**1x\_gs\_signal\_base.stl**

# License ©

This work is licensed under a  
**Creative Commons (4.0 International License)**



## Attribution

---

- ✗ | Sharing without ATTRIBUTION
- ✓ | Remix Culture allowed
- ✓ | Commercial Use
- ✓ | Free Cultural Works
- ✓ | Meets Open Definition