

GU10 socket LED bulb mount/fitting



mflayer

[VIEW IN BROWSER](#)

updated 7. 10. 2022 | published 7. 10. 2022

Summary

A fitting for a 63mm hole and GU10 socket.

[Household](#) > [Home Decor](#)

Tags: [fitting](#) [gu10](#) [ledmount](#)

I was replacing my old 12V halogen bulbs with 230V LED bulbs and I needed a custom mount for the new GU10 socket bulb with a 63mm ceiling hole in mind, so I created this fitting.

CAUTION: Consult a certified electrician for any electrical work, if you plan on using this model! Make sure to only use low heat LED lights or use heat resistant filament!

If your hole size is not 63mm, feel free to modify the F3D file to fit your purpose!

Model files



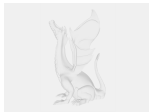
fitting.stl

📄 v11



cap.stl

📄 v11



fitting-cap.f3d

📄 v11

License ©



This work is licensed under a
[Creative Commons \(International License\)](#)

Public Domain

- ✓ | Sharing without ATTRIBUTION
- ✓ | Remix Culture allowed
- ✓ | Commercial Use
- ✓ | Free Cultural Works
- ✓ | Meets Open Definition