

## Sage/Breville precision tamper (IMS base)



bequ3

[VIEW IN BROWSER](#)

updated 10. 3. 2023 | published 10. 3. 2023

## Summary

A retrofit precision tamper for several Sage/Breville machines

[Household](#) > [Kitchen](#)

Tags: [tamper](#) [brevilledualboiler](#)

Even if I didn't like the stubby design from the start on, over month of use I came to like the neat storage solution of the Sage/Breville stock tamper. Once I'd upgraded to a precision tamper base I had to model a handle to go with the original mounting location.

## Compatibility

I've only tested the Dual Boiler, but as far as I know the stock tamper is the same for all Sage/Breville portafilter devices. So this model is most probably compatible with all machines listed below. Please comment if you can verify.

- **Dual Boiler**
- Barista Touch
- Barista Pro
- Barista Express
- Duo-Temp Pro

## Bill Of Materials

1x	DIN 603 bolt (M10 x 60mm)
1x	IMS Precision Tamper Base M10

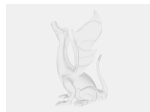
## Remarks

Even the IMS base alone is heavier than the original tamper. The magnet in my machine is strong enough to hold it securely, but be careful.

I did not design to spec for the DIN 603 but the one I got from my local hardware store. Update the dimensions in the attached Fusion 360 file and re-export if necessary.

## Model files

**ims-tamper-handle.stl**



**ims-tamper-handle.f3d**

## License ©

This work is licensed under a  
**Creative Commons (4.0 International License)**



**Attribution-ShareAlike**

- 
- ✗ | Sharing without ATTRIBUTION
  - ✓ | Remix Culture allowed
  - ✓ | Commercial Use
  - ✓ | Free Cultural Works
  - ✓ | Meets Open Definition