



Coffin Pen Box



MrHipppo

[VIEW IN BROWSER](#)

updated 22. 12. 2022 | published 22. 12. 2022

Summary

For the Spooky Season, or if you want to burry your pens. You can also store your Spooky memes in it!



14.44 hrs



1 pcs



0.15 mm



0.40 mm



PLA



147 g



Prusa MINI /
MINI+

[Household](#) > [Office](#)

Tags: [halloween](#) [halloweendecoration](#) [penbox](#)

Just glue magnets into the holes, and you are ready to go. I had to downsize the file by 7% for the gcode so it could fit on my prusa mini. If your Slicer is able of doing so, block supports on the holes for the magnets, because it is a pain in the ass to remove.

Disclaimer: Dont use it to transport your Pens. The lid could fall of.

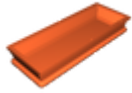
I am sure you can burry your hamster with this as well, if you do, tell me if it workes ;)

Model files

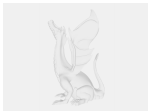


Bottom

2 files



coffin_pen_bottom.stl



coffin_pen_bottom.step

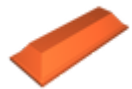


Top

2 files



coffin_pen_top.step



coffin_pen_top.stl

Print files



coffin_pen_015mm_pla_mini_14h27m.gcode

🌐 PLA 📏 0.40 mm ≡ 0.15 mm ⌚ 14.44 hrs ⚖️ 147 g 🖨️ Prusa MINI / MINI+

License

This work is licensed under a
GNU



General Public License v2.0

- ✗ | Sharing without ATTRIBUTION
- ✓ | Remix Culture allowed
- ✓ | Commercial Use
- ✓ | Meets Open Definition
- i | Share under the same license