



## Lower Poly Sintel (Sintel 2.63+)



Books

[VIEW IN BROWSER](#)

updated 7. 4. 2023 | published 7. 4. 2023

### Summary

Public domain low poly Sintel model.

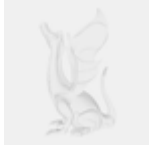
[Art & Design](#) > [Sculptures](#)

Tags: [woman](#) [blender3d](#) [women](#) [durian](#) [sintel](#)  
[blendswap](#)

Public domain low poly [Sintel](#) model imported to blender by [meta-androcto](#). Originally uploaded to [Blend Swap](#).

Sintel made by [Angela Guenette](#) (Character modeling),  
Rigged by [Nathan Vegdahl](#) (Rigging-Animation)  
Converted for XNALara by <http://xnaaral.deviantart.com/>  
<http://xnaaral.deviantart.com/art/Sintel-Pre-Version-208299244>  
Imported to blender by [meta-androcto](#)  
CC attribution the same as at [www.sintel.org](http://www.sintel.org)

### This remix is based on



**None**

## Model files

**sintel\_update-body-netfabb.stl**

☐ Repaired mesh

---

**sintel\_update-head-netfabb.stl**

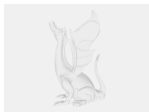
☐ Repaired mesh

---

**sintel\_update-hair.stl**

☐ One sided mesh

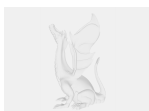
---



**sintel\_update.blend**

☐ Blender 2.6x

## Other files



**sintel-263.zip**

[Find source .stl files on Thingiverse.com](#)

## License

This work is licensed under a  
**Creative Commons (4.0 International License)**



**Attribution**

---

- ✗ | Sharing without ATTRIBUTION
- ✓ | Remix Culture allowed
- ✓ | Commercial Use
- ✓ | Free Cultural Works
- ✓ | Meets Open Definition