

1/20th scale RC10 Gold Pan Tribute Model



Angrysquirrel

[VIEW IN BROWSER](#)

updated 7. 10. 2022 | published 7. 10. 2022

Summary

1/20th scale RC10 Gold Pan Tribute Model

[Hobby & Makers](#) > [RC & Robotics](#)

Using Fusion 360, I made an RC10 Gold Pan model to be a display piece. Used hot glue to put the static pieces together, and 1.75mm filament for joints.

<https://www.youtube.com/watch?v=RTKm58JL5iU&t=8s>

Model files

goldpan.stl



frontshock.stl

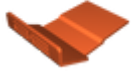




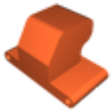
bar.stl



fronttierod.stl



skidplate.stl



rearsuspensionmount.stl



rearwheelmount.stl



rearshock.stl



frontarm.stl



reararm.stl



frontwheel.stl



rearshocktower.stl



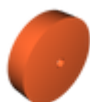
motormount.stl



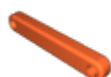
rearwheelouter.stl



rearbulkhead.stl



rearwheelinner.stl



reartierod.stl



frontbulkhead.stl



reartire.stl



frontshocktower.stl



ubody1.stl



frontwheelmount.stl



lowerbody.stl



body.stl



fronttire.stl

License

This work is licensed under a
[Creative Commons \(4.0 International License\)](https://creativecommons.org/licenses/by-nc/4.0/)



Attribution-NonCommercial

-
- ✗ | Sharing without ATTRIBUTION
 - ✓ | Remix Culture allowed
 - ✗ | Commercial Use
 - ✗ | Free Cultural Works
 - ✗ | Meets Open Definition