



## Prusa Enclosure V2 - larger hole in the lid



Zbyněk Král

[VIEW IN BROWSER](#)

updated 25. 3. 2023 | published 25. 3. 2023

### Summary

Enlarged hole in enclosure lid by 30 mm for original filament holder.



1.87 hrs



1 pcs



0.20 mm



0.40 mm



PET



33 g



Prusa  
MK3/S/S+

[3D Printers](#) > [3D Printers - Upgrades](#)

Tags: [enclosure](#) [ikeaenclosure](#) [filamentspoolholder](#) [mmu2s](#)  
[filamentholder](#) [ikealackenclosure](#)

I wanted to keep the original filament holder in the Prusa Enclosure V2 as well. However, it is necessary to enlarge the hole in the lid, originally for the MMU2S unit.

Original dimensions: 310x180 mm

Dimensions after modification: 310x210 mm

### This remix is based on



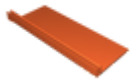
## Prusa Enclosure V2 - MMU2S

by Ondřej Strítěský

### Model files



**prusa\_mmu\_enclosure\_top\_desk\_cover\_mod\_a.stl**



**prusa\_mmu\_enclosure\_top\_desk\_cover\_mod\_b.stl**



**prusa\_mmu\_enclosure\_top\_desk\_cover\_mod.3mf**

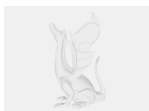
### Print files



**prusa\_mmu\_enclosure\_top\_desk\_cover\_mod\_02mm\_petg\_mk... .gcode**

PET 0.40 mm 0.20 mm 1.87 hrs 33 g Prusa MK3/S/S+

### Other files



**enclosure-lid-mod-drawing.pdf**

# License

This work is licensed under a  
**Creative Commons (4.0 International License)**



## **Attribution-NonCommercial**

---

- ✗ | Sharing without ATTRIBUTION
- ✓ | Remix Culture allowed
- ✗ | Commercial Use
- ✗ | Free Cultural Works
- ✗ | Meets Open Definition