



Chicken Legged Plant Pot Stand



Eel River Coral

[VIEW IN BROWSER](#)

updated 7. 10. 2022 | published 7. 10. 2022

Summary

Plant pot stand with chicken legs. Could be used for any round bottom objects such as flasks or orbs.



3.90 hrs



1 pcs



0.20 mm



0.40 mm



PLA



35 g



Prusa
MK3/S/S+

[Household](#) > [Home Decor](#)

Tags: [chicken](#) [halloween](#) [indoorplanter](#) [planter](#) [plantstand](#)
[witch](#) [chickenfeet](#)

Plant stand with chicken legs:

The chicken legs were designed by SketchFab user @[Nylonelycompany](#) which is shared non-commercially. You can find the chicken model [here](#). Thanks for sharing, the chicken is great and even is animated in blender!

The support ring is 100mm in diameter. The sloped interior allows for a variety of sizes of spheres and 100 mm is an easy number to scale. If you would like to scale it up to fit around a 120mm you can scale it by 120%. Remember to measure around where you want the stand to fit on

the object, not the overall width of the sphere. They are fairly strong and very stable for their purpose, they would hold a bowling ball but probably not if you dropped one on them.

I printed it with **auto generated supports in the included gcode**, the feet are modeled to have a flat bottom so they should not need support under them but the ring will. I think the support could be greatly optimized for this print but I only needed the two, if you come up with something better please share it! **There is an STL file so you can slice it to your preference.**

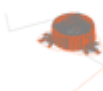
The prints in the photo were printed with Amolen Silk Color change PLA. They were printed one after the other so each had a different shade of the color change.

Model files



chicken_legged_plant_pot_stand_round_bottom.stl

Print files



chicken_legged_pot_holder_02mm_pla_mk3s_3h54m.gcode

PLA 0.40 mm 0.20 mm 3.90 hrs 35 g Prusa MK3/S/S+

License ©

This work is licensed under a
[Creative Commons \(4.0 International License\)](#)



Attribution—Noncommercial—Share Alike

✗ | Sharing without ATTRIBUTION

- ✓ | Remix Culture allowed
- ✗ | Commercial Use
- ✗ | Free Cultural Works
- ✗ | Meets Open Definition