



∞ Infinite length pole (split into segments) 2cm diameter



Triple G Workshop

[VIEW IN BROWSER](#)

updated 29. 5. 2023 | published 29. 5. 2023

Summary

5, 10 and 20cm segments that can be strung together without limit. If you're into limits, there's a foot and topper too.



4.85 hrs



6 pcs



0.20 mm



0.40 mm



PLA



38 g



Prusa
MK3/S/S+

[Hobby & Makers](#) > [Tools](#)

Tags: [pole](#) [rod](#) [staff](#) [eternal](#) [forever](#) [infinity](#) [stick](#)
[vector](#) [unending](#)

Model files



infinite-length-pole-20cm.stl

 no support



infinite-length-pole-10cm.stl

 no support



infinite-length-pole-5cm.stl

 no support




infinite-length-pole-foot.stl

 no support



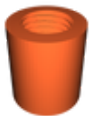
infinite-length-pole-cap.stl

 no support



infinite-length-pole.3mf

 no support



infinite-length-pole-double-female-coupling.stl

Print files



infinite-length-pole_20cm_02mm_pla_mk3s_4h51m.gcode

 PLA  0.40 mm  0.20 mm  4.85 hrs  38 g  Prusa MK3/S/S+



infinite-length-pole_10cm_02mm_pla_mk3s_2h35m.gcode

🌀 PLA 🌀 0.40 mm ≡ 0.20 mm ⌚ 2.59 hrs ⚖️ 20 g 📄 Prusa MK3/S/S+



infinite-length-pole_5cm_02mm_pla_mk3s_1h27m.gcode

🌀 PLA 🌀 0.40 mm ≡ 0.20 mm ⌚ 1.45 hrs ⚖️ 11 g 📄 Prusa MK3/S/S+



infinite-length-pole_foot_02mm_pla_mk3s_50m.gcode

🌀 PLA 🌀 0.40 mm ≡ 0.20 mm ⌚ 0.84 hrs ⚖️ 8 g 📄 Prusa MK3/S/S+



infinite-length-pole_cap_02mm_pla_mk3s_33m.gcode

🌀 PLA 🌀 0.40 mm ≡ 0.20 mm ⌚ 0.55 hrs ⚖️ 4 g 📄 Prusa MK3/S/S+



infinite-length-pole_full_set_02mm_pla_mk3s_8h18m.gcode

🌀 PLA 🌀 0.40 mm ≡ 0.20 mm ⌚ 8.30 hrs ⚖️ 82 g 📄 Prusa MK3/S/S+

License ©



This work is licensed under a
Creative Commons (4.0 International License)

Attribution-ShareAlike

- ✗ | Sharing without ATTRIBUTION
- ✓ | Remix Culture allowed
- ✓ | Commercial Use
- ✓ | Free Cultural Works
- ✓ | Meets Open Definition