



Suitcase wheel and leg replacement



avolkov

[VIEW IN BROWSER](#)

updated 4. 7. 2023 | published 4. 7. 2023

Summary

Replacement luggage wheel - 60mm leg - 70mm total length for Christiano luggage.

[Hobby & Makers](#) > [Mechanical Parts](#)

Tags: [608bearing](#) [inlineskates](#) [luggage](#) [openscad](#)

WIP.

Working on v2 after examining v1 after use.

Replacement for 70mm tall leg and wheel part, with 60mm wheel diameter.

See hardware-recess.scad for the import of recess for M3 and M5 bolts and nuts – <https://github.com/avolkov/openscad-designs/blob/master/libs/hardware-recess.scad>

See **draft_notes.pdf** for all of the measurements and design drawings.

BOM

- 2x 608 bearings
- 1x 45mm M5 bolt
- 1x M5 acorn nut

- 1x 35mm M5 bolt
- 1x M5 nyloc nut

Washers, with one of the washers already greased and installed into the base of the leg.

- 2x 40mm M3 bolts to hold the layers. 35mm are better, fit, but I don't have those.
- 2x M3 nuts

Print instructions

Leg: material -- PETG, solid layers/perimeters 3, infill 30%, layer height 0.2mm

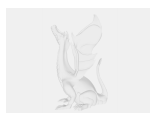
Wheel: material - TPU 91A, layers 4, perimeters 3, infill 15% (should be more feels a little soft, but works), layer height 0.2mm

Sleeve: material - TPU 91A, layers/perimeters 1, infill 10%, layer height 0.2mm

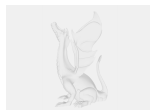
Orient objects as described in *.3mf files, consult these files for more print settings.

Assembly instructions

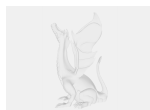
Model files



body.scad



wheel.scad



sleeve.scad



body.stl



wheel.stl



sleeve.stl



body.3mf



sleeve.3mf



wheel.3mf



body_v2.scad



body_v2.stl



body_v2.3mf

Other files



draft_notes.pdf

License

This work is licensed under a
Creative Commons (4.0 International License)



Attribution-ShareAlike

- ✗ | Sharing without ATTRIBUTION
- ✓ | Remix Culture allowed
- ✓ | Commercial Use
- ✓ | Free Cultural Works
- ✓ | Meets Open Definition