



COVID-19 Emergency mask with the use of cotton pads as a filter

N Navakasi

[VIEW IN BROWSER](#)

updated 10. 4. 2020 | published 10. 4. 2020

Summary

This mask provides a valve for inhalation and exhalation that allows you not to accumulate moisture in the mask .

[Costumes & Accessories](#) > [Masks](#)

This mask provides a valve for inhalation and exhalation that allows you not to accumulate moisture in the mask .

I designed 2 mask sizes Adult/male and child/female. For printing, you will need Flex plastics, the best fit is TPU

You can use cotton pads as a filter. After each use, discard the discs and wash the mask in hot water (not boiling water). models: valve 3 pieces, seal 2 pieces and brim 2 pieces, printed with TPU plastic. For a large model, the brim is divided into 2 parts due to the fact that my printer did not fit in size .

ATTENTION! the second brim should be mirrored! For the small version of the respirator, there is a combined brim version. Brim should be glued to the body of the respirator with super glue! BE SURE TO WAIT FOR THE GLUE TO DRY!

Have a good print, ask questions, and I will try to answer them promptly if there are any difficulties in printing

Print instructions

Rafts:

Yes

Supports:

Yes

Resolution:

0.2

Infill:

30

Filament_brand:

any

Filament_color:

any

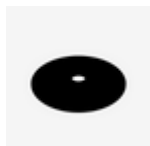
Filament_material:

PLA/PET-G , TPU

Model files



brim_1.stl



valve.stl



seal.stl



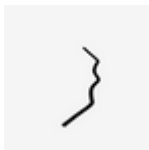
grid_cute.stl



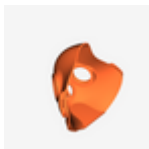
grid.stl



brim_s.stl



brim_s_combine.stl



mask_s.stl



cap.stl



cartridge.stl



mask_l.stl



fbg4s_mask_s.stl

License

This work is licensed under a
Creative Commons (4.0 International License)



Attribution—Noncommercial—Share Alike

- ✗ | Sharing without ATTRIBUTION
- ✓ | Remix Culture allowed
- ✗ | Commercial Use
- ✗ | Free Cultural Works
- ✗ | Meets Open Definition