



## Heart Shaped Vase



Frank H

[VIEW IN BROWSER](#)

updated 8. 10. 2022 | published 8. 10. 2022

### Summary

A 150mm tall heart shaped vase in vase mode



4.57 hrs



1 pcs



0.15 mm



0.80 mm



PLA



83 g



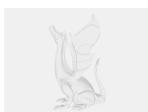
Creality  
Ender 3 V2

[Household](#) > [Home Decor](#)

Tags: [flowervases](#) [vasemode](#) [vases](#)

A 150mm tall heart shaped vase in vase mode. Build volume is 175mm x 170mm x 150mm.

### Model files



heart-vase.sldprt



**ss\_heart-vase.3mf**



**heart-vase.stl**

## Print files



**ss\_heart-vase.gcode**

🌀 PLA 📏 0.80 mm 📏 0.15 mm ⌚ 4.57 hrs ⚖️ 83 g

📄 Sovol SV02, Material PLA+, Initial layers 7 at 0.3mm, Nozzle Temp 210 throughout, Bed Temp 60

## License ©

This work is licensed under a  
[Creative Commons \(4.0 International License\)](#)



**Attribution-NonCommercial**

- ✗ | Sharing without ATTRIBUTION
- ✓ | Remix Culture allowed
- ✗ | Commercial Use
- ✗ | Free Cultural Works
- ✗ | Meets Open Definition