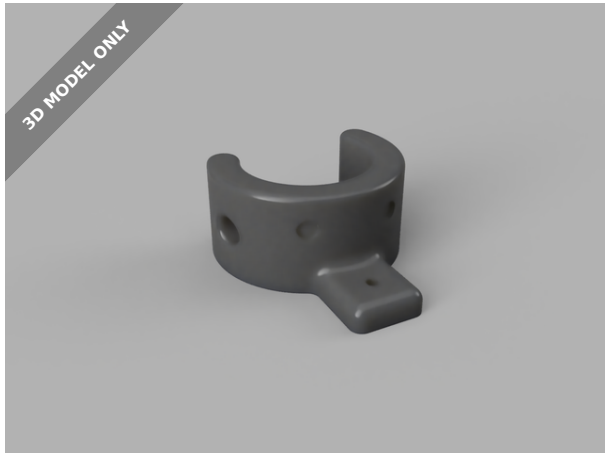


3D MODEL ONLY



Conduit end holder

**mikeeg**[VIEW IN BROWSER](#)

updated 8. 10. 2022 | published 8. 10. 2022

Summary

snap-on conduit holder with lateral mount

[Household](#) > [Living Room](#)

snap-on conduit holder with lateral mount for 1/2 " PVC conduit.

I'm using this as a curtain rod holder for my camper, mounted to a wall at a 90 degree angle to the window. Can be stuck to wall with 2-sided tape.

Holes allow for screw fastening to conduit.

Model files

**stick-on-conduit-holder.stl**

License

This work is licensed under a
Creative Commons (International License)



Public Domain

- ✓ | Sharing without ATTRIBUTION
- ✓ | Remix Culture allowed
- ✓ | Commercial Use
- ✓ | Free Cultural Works
- ✓ | Meets Open Definition