



22mm Draining Valve cover Adapter for EasyBreath Decathlon Mask



Claudio M.

[VIEW IN BROWSER](#)

updated 21. 4. 2021 | published 10. 4. 2020

Summary

As already done by oceanreef for its masks, this adapter allows the mounting of 22mm filters for medical use, on the...

[Healthcare](#) > [Medical Tools](#)

Tags: [filter](#) [adapter](#) [22mm](#) [facemask](#) [covid19](#)
[coronavirus](#) [covid](#) [decathlon](#) [covidmask](#) [easybreath](#)
[unina](#) [chin](#)

As already done by oceanreef for its masks, this adapter allows the mounting of 22mm filters for medical use, on the draining valve of the decathlon easybreath mask.

The design was conceived to be sealed with silicone to the body of the mask to guarantee the seal since there is no seal element.

By sealing the adapter with silicone it is possible to remove the drain valve (also called chin valve)

We recommend using these masks transformed into PPE only as a last resort.

There are conflicting opinions on the use and effectiveness of these devices as PPE.

Therefore I report below the links of two of some of the publications available on the matter.

<https://docs.google.com/document/d/1J22le3dBZBnNDXGIlJRb38z7v7LaOjKfDeN9f0tFeKY/edit#heading=h.kbdc4jqikxwz>

https://antwerpdesignfactory.be/decathlon.html?fbclid=IwAR2wIJQrCjazJ26KXFARSE2e4IIA21Qjkuc_kfzt-6JTRq-T1ooBejwC-bk#Methods

Print instructions

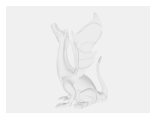
If you use layer-change, print only the top at high layer resolution. Use silicon to seal the adapter to mask

Best with flexible materials (avoid ABS or non FDA compliant)

Model files



22mm-draining-valve-cover-adapter-for-easybreath.stl



22mm-draining-valve-adapter-for-easybreath-decat.step

License ©

This work is licensed under a
[Creative Commons \(4.0 International License\)](#)



Attribution—Noncommercial—Share Alike

-
- ✗ | Sharing without ATTRIBUTION
 - ✓ | Remix Culture allowed
 - ✗ | Commercial Use

- ✖ | Free Cultural Works
- ✖ | Meets Open Definition