



Watering can - approx. 1 liter capacity



vmLOGIC

[VIEW IN BROWSER](#)

updated 16. 4. 2024 | published 16. 4. 2024

Summary

Watering can for small plants. Holds approx. 1 liter of water. No support required.



14.00 hrs



1 pcs



0.20 mm



0.40 mm



PET



194 g



Prusa MINI /
MINI+

[Household](#) > [Outdoor & Garden](#)

Tags: [wateringcan](#) [giesskanne](#)

First of all thanks to **krom** for the beautiful original model and sharing the f3d file.

You should print the watering can with **PETG**. With PLA there is a risk that the can will leak.

I printed with 100% infill to be on the safe side. It may be that 30% is sufficient, but I have not tested this.

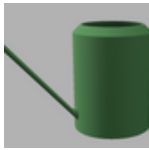
No support required.

If you like my color changes in the photo, here are the settings: 10.2, 70.0, 85.2mm.

I am looking forward to your Makes! :-)

If you like this model, feel free to check out my others [here](#).

This remix is based on



Watering can for small plants - 1L

by krom

Model files



watering-can.3mf



watering-can.stl

Print files



watering-can_02mm_pla_mini_14h0m.gcode

⚙ PET ⚙ 0.40 mm ⚙ 0.20 mm ⌚ 14.00 hrs ⚖ 194 g 🖨 Prusa MINI / MINI+

License

This work is licensed under a
Creative Commons (4.0 International License)



Attribution—Noncommercial—Share Alike

- ✗ | Sharing without ATTRIBUTION
- ✓ | Remix Culture allowed
- ✗ | Commercial Use
- ✗ | Free Cultural Works
- ✗ | Meets Open Definition