



## Wallmount for extrusion and camera



Avdieking3D

[VIEW IN BROWSER](#)

updated 8. 10. 2022 | published 8. 10. 2022

### Summary

I printed a tripod but walking around it made it shake so i needed a more stable version

[Gadgets](#) > [Photo & Video](#)

Tags: [3030extrusion](#) [cameramount](#) [wallmounting](#)

[https://www.tiktok.com/@avdieking3d/video/7151874324801129734?is\\_from\\_webapp=1&sender\\_device=pc&web\\_id=6974433084159968773](https://www.tiktok.com/@avdieking3d/video/7151874324801129734?is_from_webapp=1&sender_device=pc&web_id=6974433084159968773)

Wallmount for extrusion and camera.

There are two version for the camera mount one with an m8 screw from the top and one with m5 screw from the side using nuts in the extrusions.

I use these two things on my camera mount:

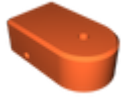
[https://www.amazon.de/gp/product/B01AZ558WE/ref=ppx\\_yo\\_dt\\_b\\_asin\\_title\\_o07\\_s00?ie=UTF8&psc=1](https://www.amazon.de/gp/product/B01AZ558WE/ref=ppx_yo_dt_b_asin_title_o07_s00?ie=UTF8&psc=1)

[https://www.amazon.de/gp/product/B0833QHV4S/ref=ppx\\_yo\\_dt\\_b\\_asin\\_title\\_o07\\_s00?ie=UTF8&psc=1](https://www.amazon.de/gp/product/B0833QHV4S/ref=ppx_yo_dt_b_asin_title_o07_s00?ie=UTF8&psc=1)

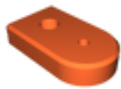
# Model files



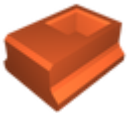
wallmount.stl



extrusion\_camera\_mount\_m5\_hammer\_nut.stl



extrusion\_camera\_mount\_m8\_screw.stl



extrusionmount\_m8.stl



extrusionmount\_m5.stl

## License

This work is licensed under a  
[Creative Commons \(4.0 International License\)](https://creativecommons.org/licenses/by-nc-sa/4.0/)



**Attribution—Noncommercial—Share Alike**

- ✗ | Sharing without ATTRIBUTION
- ✓ | Remix Culture allowed
- ✗ | Commercial Use
- ✗ | Free Cultural Works
- ✗ | Meets Open Definition

