



## 2.4" atari sdrive max case

 **Waltermixxx**

[VIEW IN BROWSER](#)

updated 8. 10. 2022 | published 8. 10. 2022

### Summary

just chopped it up, to suite my needs, thank you alTec0 for doing all the hard work. printed in PLA

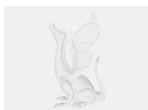
[Hobby & Makers](#) > [Electronics](#)

just chopped it up, to suite my needs, thank you alTec0 for doing all the hard work.

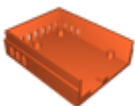
printed in PLA

Category: Electronics

### Model files



**large\_display\_moddedtop\_291203.stl**



**moddedbase.stl**



**moddedtop.stl**

[Find source .stl files on Thingiverse.com](#)

## License ©

This work is licensed under a  
**Creative Commons (4.0 International License)**



### Attribution

---

- ✗ | Sharing without ATTRIBUTION
- ✓ | Remix Culture allowed
- ✓ | Commercial Use
- ✓ | Free Cultural Works
- ✓ | Meets Open Definition