

Dog Treat Dispenser

W **Waltermixxx**

VIEW IN BROWSER

updated 8. 10. 2022 | published 8. 10. 2022

Summary

This is a dog treat dispenser based on the Judd Treat Dispenser code from NYCCNC. Project information available here:...

[Household](#) > [Pets](#)

Tags: [dogtreat](#) [dogtreats](#) [petfeeder](#)

This is a dog treat dispenser based on the Judd Treat Dispenser code from NYCCNC. Project information available here: <http://www.nyccnc.com/judd-treat-machine.html>

I modified the code so it controls a servo to dispense the treats. It's not complete yet, still modifying the code. But all the parts have been designed or remixed from other models.

The webcam stand is a remix of this project: <http://www.thingiverse.com/thing:523304/#remixes>

The servo stand is an unpublished remix from this project: <http://www.thingiverse.com/thing:60990>

the raspberry pi mount is this thing: <http://www.thingiverse.com/thing:37889>

Link to raspberry Pi forum post with latest software!!

<https://www.raspberrypi.org/forums/viewtopic.php?f=37&t=179424&p=1151776>

Print Settings

Printer Brand:

MakerBot

Printer:

MakerBot Replicator 2

Resolution:

.2

Infill:

Varied, thin walled items like the tubes and spout were 25% other things were about 15%

Notes:

I think only the spout required support. the spiral was printed standing up.
the feeder tube was printed standing up, the hopper on top was printed standing up.

Category: Pets

Model files



servostand.stl



hopper-lid.stl



screwii.stl



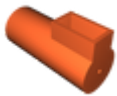
treat-dispenser.py



servocoupler.stl



hopper.stl



feeder-tube.stl



raspberrypi_plate_screwmount.stl



treat-spout.stl



screw_motor_mount.stl

Other files



sources.txt

[Find source .stl files on Thingiverse.com](https://www.thingiverse.com/thing:1000000)

License ©

This work is licensed under a
Creative Commons (4.0 International License)



Attribution

- ✗ | Sharing without ATTRIBUTION
- ✓ | Remix Culture allowed
- ✓ | Commercial Use
- ✓ | Free Cultural Works
- ✓ | Meets Open Definition