

# NeoPixel Ring with Raspi Cam with added 80mm stand

**W** Waltermixxx

[VIEW IN BROWSER](#)

updated 8. 10. 2022 | published 8. 10. 2022

## Summary

I added a stand to this very clever design by Habales. printed at .1mm because of the tiny pegs to hold the raspi cam....

[Hobby & Makers](#) > [Electronics](#)

I added a stand to this very clever design by Habales.

printed at .1mm because of the tiny pegs to hold the raspi cam.

25% infill.

I know there is no joint to pivot the camera, (next one will have that) but for now, i was thinking i would immerse the stand in boiling water, and simply bend the stand to an appropriate angle, then mount it. :)

## Print Settings

### Printer Brand:

MakerBot

### Printer:

MakerBot Replicator 2

### Rafts:

Yes

**Supports:**

Yes

**Resolution:**

.1mm

**Infill:**

25%

**Notes:**

I will post a picture when the print is done. :)

this is for my dog treat dispenser.

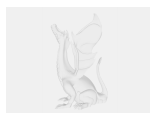
Category: Electronics

## Model files



neo-rpc-stand.stl

## Other files



sources.txt

[Find source .stl files on Thingiverse.com](https://www.thingiverse.com/thing:1000000)

# License ©

This work is licensed under a  
**Creative Commons (4.0 International License)**



## Attribution

---

- ✗ | Sharing without ATTRIBUTION
- ✓ | Remix Culture allowed
- ✓ | Commercial Use
- ✓ | Free Cultural Works
- ✓ | Meets Open Definition