



Isense - Structure Iphone 6s Plus Bracket

 **Waltermixxx**

[VIEW IN BROWSER](#)

updated 8. 10. 2022 | published 8. 10. 2022

Summary

Basically i created a block a bit thicker than the iphone 6s Plus with rounded corners, and Booleaned out some of the...

[Gadgets](#) > [Portable Devices](#)

Basically i created a block a bit thicker than the iphone 6s Plus with rounded corners, and Booleaned out some of the model. I also made a groove for the lense as it slides into place. and I also made the lense hole a bit bigger. :) I printed right on my build plate on my Makerbot Replicator 2 with supports for the overhang. :) a bit snug just to hold it, but not tight. :) hope you like it... One sour note, You will need to re-calibrate your sensor for the iphone, and if you have an Isense you wont be able to use Occipital's app to do it anymore, Isense devices can no longer calibrate on Occipital servers. :)

but if you are doing quick and dirty 3d scans for printing at home it should be fine :)...

Cheers.

Print Settings

Printer Brand:

MakerBot

Printer:

MakerBot Replicator 2

Rafts:

Yes

Supports:

Yes

Resolution:

.2mm

Infill:

15%

Notes:

i used 3 shells just so it was stronger... i did not use a raft, buy you might want to. I have been using blue tape wiped with 99% alcohol and the plastic sticks very well to it... but a raft might be worth doing if you are not sure about that. :)

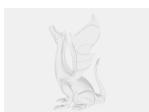
Category: Mobile Phone

Model files



isense_6s_plus.stl

Other files



sources.txt

[Find source .stl files on Thingiverse.com](#)

License ©

This work is licensed under a
Creative Commons (4.0 International License)



Attribution

- ✗ | Sharing without ATTRIBUTION
- ✓ | Remix Culture allowed
- ✓ | Commercial Use
- ✓ | Free Cultural Works
- ✓ | Meets Open Definition