

## Flashforge Creator Pro Filament Spool. 2.08" Hole.



Ken226

[VIEW IN BROWSER](#)

updated 8. 10. 2022 | published 8. 10. 2022

## Summary

you will need plenty of supports. I used PLA with 25% infill.

---

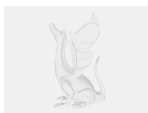
[Hobby & Makers](#) > [Other Ideas](#)

---

you will need plenty of supports. I used PLA with 25% infill.

Category: 3D Printing

## Model files



**new\_spool\_holders.ipt**



**new\_spool\_holders.stl**

[Find source .stl files on Thingiverse.com](#)

# License ©

This work is licensed under a  
**Creative Commons (4.0 International License)**



## Attribution

---

- ✗ | Sharing without ATTRIBUTION
- ✓ | Remix Culture allowed
- ✓ | Commercial Use
- ✓ | Free Cultural Works
- ✓ | Meets Open Definition