

## Mill Table Parts Tray, w Table stop clearance, Right Side



Ken226

[VIEW IN BROWSER](#)

updated 8. 10. 2022 | published 8. 10. 2022

### Summary

This is an 8.5" x 4" parts tray for milling machine tables. Attaches to the front T slot via 2 3/8-16 socket head cap...

---

[Hobby & Makers](#) > [Other Ideas](#)

---

This is an 8.5" x 4" parts tray for milling machine tables. Attaches to the front T slot via 2 3/8-16 socket head cap screws. Print with your choice of materials, using supports for the screw holes.

This is the Right Side version, with clearance to allow it to pass in front of the x+ table stop.

### Print Settings

#### Printer Brand:

FlashForge

#### Printer:

Creator Pro

#### Rafts:

Yes

**Supports:**

Yes

**Resolution:**

200

**Infill:**

30%

**Filament:** PolyMaker PLA Blue

**Notes:**

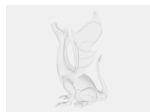
Supports are only needed for the screw holes. I used a raft, but it likely isn't necessary.

Category: 3D Printing

## Model files



**parts\_caddy\_\_flashforge\_file.stl**



**parts\_caddy.ipt**

[Find source .stl files on Thingiverse.com](#)

## License ©

This work is licensed under a  
**Creative Commons (4.0 International License)**



**Attribution**

---

- ✖ | Sharing without ATTRIBUTION
- ✔ | Remix Culture allowed
- ✔ | Commercial Use
- ✔ | Free Cultural Works
- ✔ | Meets Open Definition