



Parametric fully assembled ball bearing V2

 Architector1324

[VIEW IN BROWSER](#)

updated 20. 10. 2022 | published 20. 10. 2022

Summary

Just print and wiggle base in all directions to break balls from separator.

[3D Printers](#) > [Test Models](#)

Tags: [ballbearing](#) [bearing](#) [calibration](#) [calibrationtest](#)
[openscad](#) [openscadcustomizer](#) [parametric](#) [printinplace](#)
[testprint](#)

Ball Bearing V2

Checkout the original model: <https://www.printables.com/model/290684-parametric-fully-assembled-ball-bearing>

1. Added balls separator.
2. Added balls separator test print.
3. Less backlash.
4. No supports needed at all.

Just print and wiggle base in all directions to break balls from separator.
Updated: fixed errors with use module as a library.

This remix is based on



Parametric fully assembled ball bearing

by Architector1324

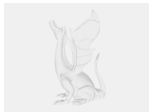
Model files



test.stl



bearing.stl



bearing.scad

License

This work is licensed under a
[Creative Commons \(4.0 International License\)](#)



Attribution

- ✗ | Sharing without ATTRIBUTION
- ✓ | Remix Culture allowed
- ✓ | Commercial Use
- ✓ | Free Cultural Works
- ✓ | Meets Open Definition