

Bambu Lab Thin Bin w/ Magnet

LEV 3DD Lev 3DD

[VIEW IN BROWSER](#)

updated 26. 9. 2023 | published 26. 9. 2023

Summary

Ultra thin poop bin with a wall to catch any tall poops. If the spool holder can fit, this bin can.

[3D Printers](#) > [Bambu Lab Parts & Upgrades](#)

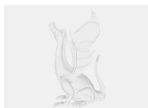
Tags: [poop](#) [lab](#) [tray](#) [bin](#) [bambu](#) [bambulab](#)

Thin poop bin that is designed to be 1mm less deep than the spool holder. This way, you can always fit the bin if the spool holder is installed. Magnet used is 6x3mm and is a tight press-fit.

Model files



thinbin.3mf



thinbin.step



thinbin.f3d

License ©

This work is licensed under a
Creative Commons (4.0 International License)



Attribution

- ✗ | Sharing without ATTRIBUTION
- ✓ | Remix Culture allowed
- ✓ | Commercial Use
- ✓ | Free Cultural Works
- ✓ | Meets Open Definition