

7-cilinder radial engine



Neybao

[VIEW IN BROWSER](#)

updated 8. 10. 2022 | published 8. 10. 2022

Summary

A radial engine model



13.63 hrs



2 pcs



0.30 mm
0.20 mm



0.40 mm



PET



181 g



Prusa
MK3/S/S+

[Learning](#) > [Engineering](#)

Tags: [bearing](#) [engine](#) [piston](#)

Print the "Engine block" at 0.3mm, if printing lower make sure the bearing is not connected to itself (right click model/Split/To objects)

the "Finger Drive" can be used to hold the engine at a displaying angle (see second picture)

the counterweight works best if printed in 100% infill

for the orientation of the parts see the gcode.

everything else:

0.20mm

Lightning infill at 20%

Model files

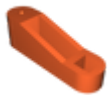


STL files

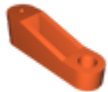
7 files



piston.stl



connection_rod_master.stl



connection_rod.stl



articulating_rod_connection.stl



counterweight.stl



engine_block.stl

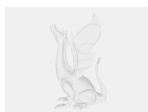


finger_drive.stl

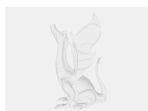


STEP files

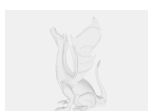
7 files



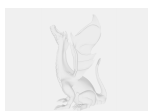
piston.step



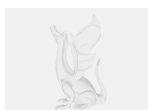
connection_rod_master.step



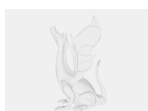
connection_rod.step



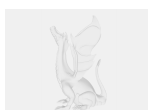
articulating_rod_connection.step



counterweight.step



engine_block.step



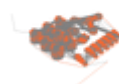
finger_drive.step

Print files



engine_block_03mm_petg_mk3s_6h42m.gcode

⊗ PET ⊕ 0.40 mm ≡ 0.30 mm ⌚ 6.69 hrs ⚖ 118 g 🖨 Prusa MK3/S/S+



parts_02mm_petg_mk3s_6h57m.gcode

⊗ PET ⊕ 0.40 mm ≡ 0.20 mm ⌚ 6.94 hrs ⚖ 63 g 🖨 Prusa MK3/S/S+

License

This work is licensed under a
Creative Commons (4.0 International License)



Attribution-NonCommercial

- ✗ | Sharing without ATTRIBUTION
- ✓ | Remix Culture allowed
- ✗ | Commercial Use
- ✗ | Free Cultural Works
- ✗ | Meets Open Definition