



## RepRapPro Ormerod 2 bed cable suspension



bart

[VIEW IN BROWSER](#)

updated 8. 10. 2022 | published 8. 10. 2022

### Summary

This is an add-on for RepRapPro's Ormerod 2 printer. The bed cable on one of the two Ormerods that I operate would get...

[3D Printers](#) > [3D Printers - Upgrades](#)

Tags: [heatbedcableholder](#) [heatedbed](#) [ormerod2](#)

This was migrated from my Thingiverse profile and is from 2016.

This is an add-on for RepRapPro's Ormerod 2 printer.

The bed cable on one of the two Ormerods that I operate would get dragged across and into the depression on the right y-plate as the bed would move back and forth during a print. This would make me paranoid about the cable getting bent and jammed underneath the bed or getting caught in the y-axis motor, causing a mess and a failed print. Oddly enough, this wasn't happening on the second Ormerod: this one had a less floppy bed cable shielding which kept the cable away from the motor and the y end plate because of its springiness.

Anyway, the present thing attaches to the Ormerod 2's PSU housing via the same bolt that screws the acrylic brace to it (see pictures). You'll also need a soft spring and a cable tie. The complete assembly keeps the bed cable

away from the motor and potential snagging under the heated bed (see pictures).

## Print Settings

### Printer Brand:

RepRap

### Printer:

Ormerod 2

### Rafts:

No

### Supports:

No

### Notes:

PLA/ABS standard settings

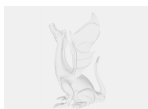
## How I Designed This

Designed with OpenSCAD, sliced with Slic3r.

## Model files



**bed\_cable\_support.stl**



**bed\_cable\_support.scad**

[Find source .stl files on Thingiverse.com](#)

# License

This work is licensed under a  
**Creative Commons (4.0 International License)**



**Attribution-ShareAlike**

---

- ✗ | Sharing without ATTRIBUTION
- ✓ | Remix Culture allowed
- ✓ | Commercial Use
- ✓ | Free Cultural Works
- ✓ | Meets Open Definition