

## Dual grip arm for cylindrical objects



bart

[VIEW IN BROWSER](#)

updated 8. 10. 2022 | published 8. 10. 2022

### Summary

This was designed for a very specific purpose: to hold two miniature torches pointing at an electrolysis cell at an...

[Learning](#) > [Engineering](#)

Tags: [arm](#) [holdingarm](#) [illumination](#) [torch](#)

This was migrated from my Thingiverse profile and is from 2015/2016.

This was designed for a very specific purpose: to hold two miniature torches pointing at an electrolysis cell at an angle from the sides to allow video recording of the electrolysis cell without the torches shining directly into the camera.

I imagine it could be used or adapted for other purposes: just change the parameters in the .SCAD file.

You will need additional bolts/screws, nuts and washers as seen in the pictures...

### Print Settings

#### Printer Brand:

RepRap

**Printer:**

Ormerod 2

**Rafts:**

No

**Supports:**

No

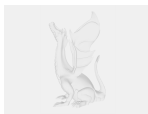
**Notes:**

PLA standard settings

**How I Designed This**

Designed in OpenSCAD, sliced with Slic3r.

## Model files



**torch\_holder.scad**



**torch\_holder.stl**

[Find source .stl files on Thingiverse.com](#)

## License

This work is licensed under a  
**Creative Commons (4.0 International License)**



**Attribution-ShareAlike**

✖ | Sharing without ATTRIBUTION

- ✓ | Remix Culture allowed
- ✓ | Commercial Use
- ✓ | Free Cultural Works
- ✓ | Meets Open Definition